

Quick Guide

MobileTracker for BlackBerry® Wireless Handheld

About

MobileTracker is a GPS tracking application for recording your GPS positions and creates a tracklog file on your Micro-SD-Card. You can easily view your tracklog in map applications like Google Earth™, NASA WorldWind™ or share it using Goolge Maps™.



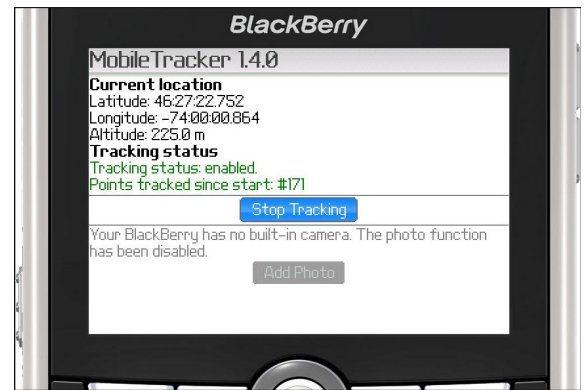
Extract all contents of the *MobileTracker.zip* file to a single directory and select the *MobileTracker.alx* in the “Application Loader” of your “BlackBerry Desktop Manager”. Follow the instructions and *MobileTracker* will be installed on your BlackBerry®.

Installation

Tracking

Start *MobileTracker* by clicking onto the *MobileTracker* icon on your BlackBerry's desktop. You can keep the current settings and go ahead clicking on the “Start Tracking” button to start recording your GPS position immediately.

Adjust the default settings by entering a custom tracklog name, changing the delay between position recordings, changing the altitude recording mode or even disable height recording to save battery. You can also enable notifications once a specific number of positions have been tracked. Click the BlackBerry's BACK / Escape button to put *MobileTracker* into background for continuous tracking while using your BlackBerry® for something else.



Connect your BlackBerry® to your desktop computer and select the mass storage device that has been created by your BlackBerry's Micro-SD-Card. If Google Earth™ is already installed you can just double click onto the tracklog file (e.g. 2100000a_2007-06-13.kml) and your tracklog will be loaded into Google Earth™. You can copy the tracklog file, attach it to an email to send it to your friends or even share it via Google Maps™.

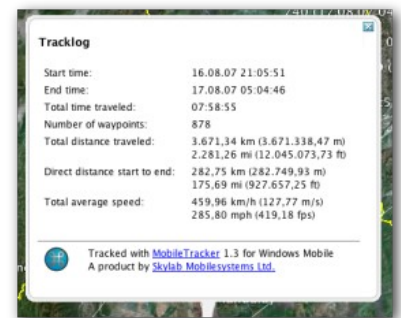
View & Share

Statistics

MobileTracker comes with a lot of statistic output of your tracklog like shown on the right.

The following data is tracked and calculated for the tracklog: Start and end time, traveled time, number of points recorded, total distance traveled, direct distance start to end, total average speed.

All data is presented to you in metric and imperial units for your convenience.



Requirements

BlackBerry® OS 4.2 or above; Micro-SD-Card installed;
Activated internal GPS or external Bluetooth GPS receiver paired with your BlackBerry®

Quick Guide

MobileTracker for BlackBerry® Wireless Handheld

Options

There are a bunch of options you can adjust at *MobileTracker's* **Options** screen.

Name: The name of the tracklog.

Directory: The directory newly created tracklog files will be stored to.

Delay: Timespan between position recordings. The higher this value is the less is your battery drain.

Track altitude: If you set this to "no" battery consumption will be less.

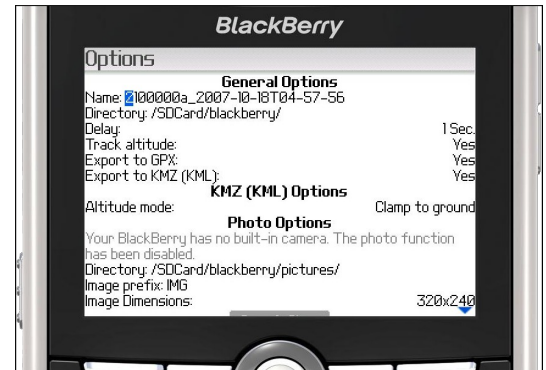
Export to GPX / KMZ(KML): Select the format you want your tracklog saved to.

Altitude mode: A KML specific setting for tracklog point visualization in Google Earth™.

Photo directory: The directory your camera is storing its photos in (default value should be OK).

Image prefix: The first part of image names your camera creates (default value should be OK).

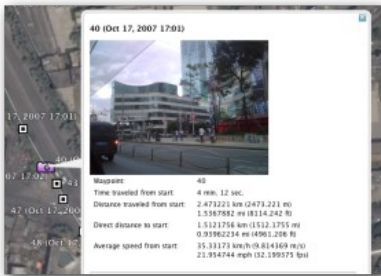
Image dimensions: You can adjust the size of the image in your tracklog here.



Photos

This feature allows you to embed a photo of your built-in camera into a tracklog file.

Photo support is only available on BlackBerry® Wireless Handhelds who come with a built-in camera and if you have "Export to KMZ (KML)" set to "Yes" at the "Options" screen. Photos can only be embedded into KMZ tracklog files. To add a photo to the next position point of your tracklog click the "Add Photo" button at *MobileTracker's* main screen. The camera application will start and you can take your photo. By closing the camera and entering *MobileTracker* again the last photo you have taken will be added to the next tracklog point. You can see an example of such a photo on the left side.



Troubleshooting

- Installation will not succeed?
 - Please upgrade your BlackBerry desktop software: <http://www.blackberry.com/support>
- No position? / Nothing is tracked?
 - Places where *MobileTracker* might not work can be found on the right.
 - Make sure your internal GPS receiver is activated (check with provider) or your external Bluetooth GPS receiver is paired correctly.
 - Enable file system access and LBS/GPS access for *MobileTracker* in „Options → Advanced Options → Applications → MobileTracker → Edit Permissions“.
 - Check the GPS coverage of your current location to be sure you get a GPS fix.
 - Try to reboot your BlackBerry® by removing and replacing your battery.
- Saving takes too long?
 - It might take some time if you have tracked a lot of points. Don't worry, just wait until the export is finished.
- Something else?
 - Go to your BlackBerry® desktop and type „LGLG“ while holding the „ALT“ key. The BlackBerry's internal log comes up. Please check it and send anything related to info@skylab-mobilesystems.com.



Bad or no GPS satellite coverage:
In houses, in tunnels, downtown (skyscrapers).



Good GPS satellite coverage:
Outside on the street and in open areas.

Requirements

BlackBerry® OS 4.2 or above; Micro-SD-Card installed;
Activated internal GPS or external Bluetooth GPS receiver paired with your BlackBerry®